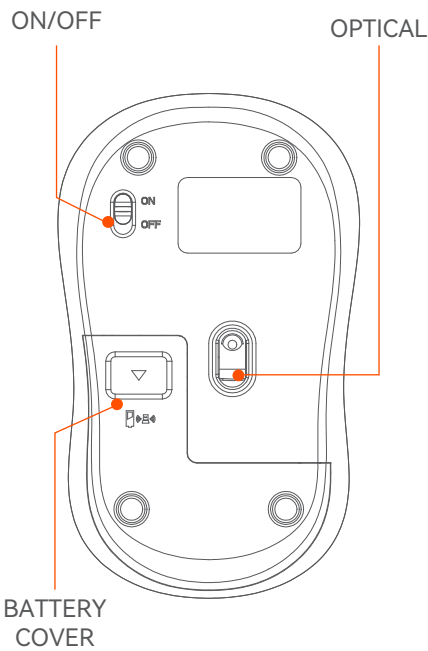
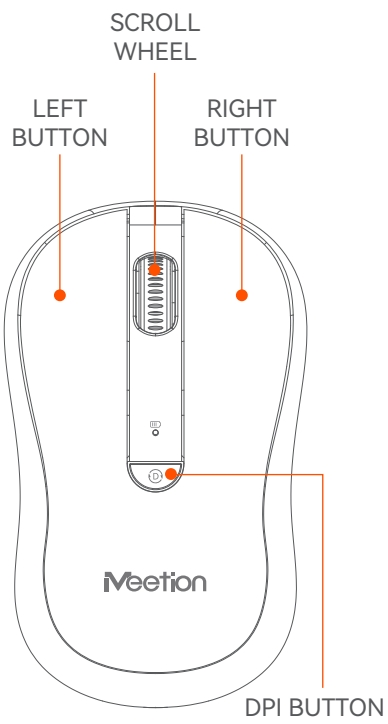
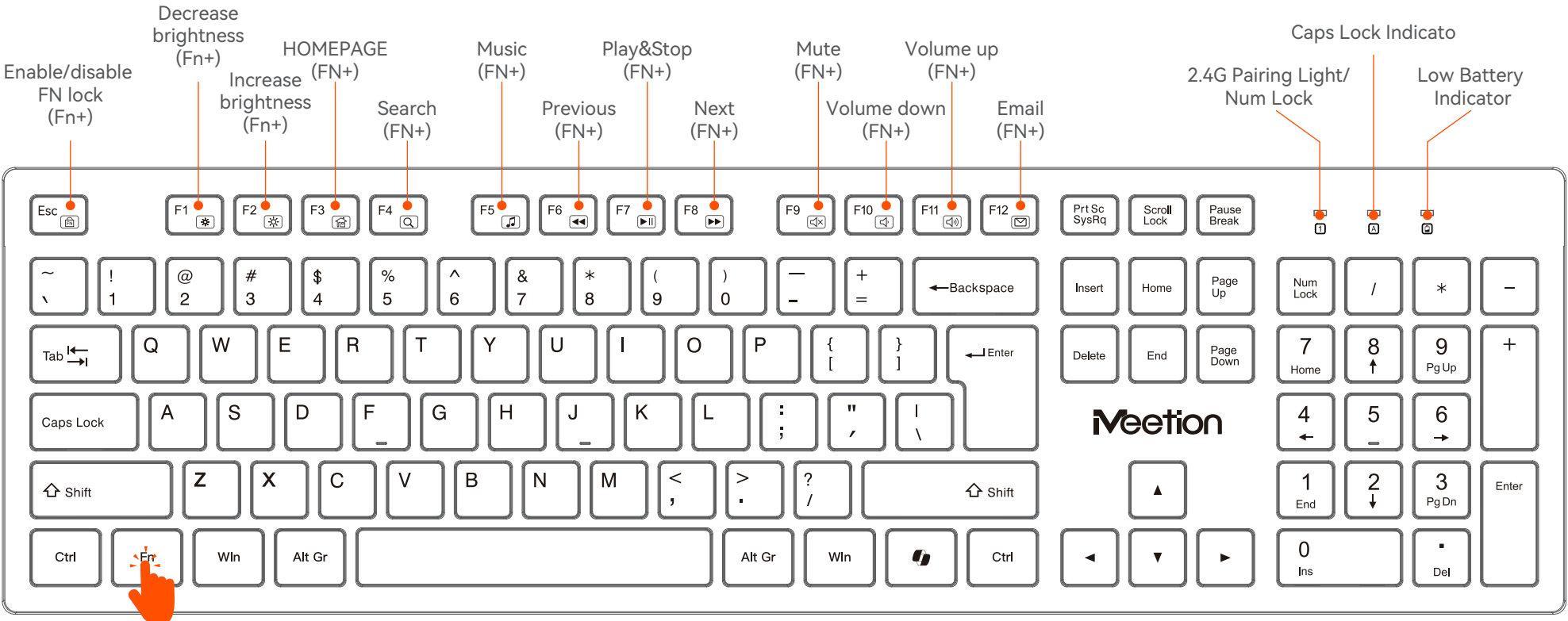
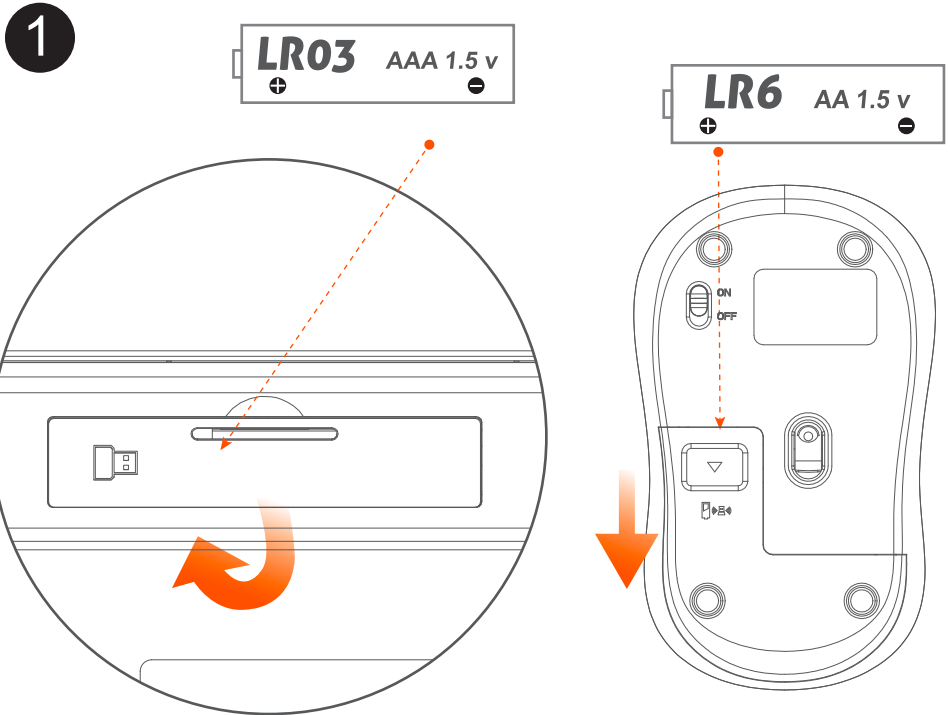


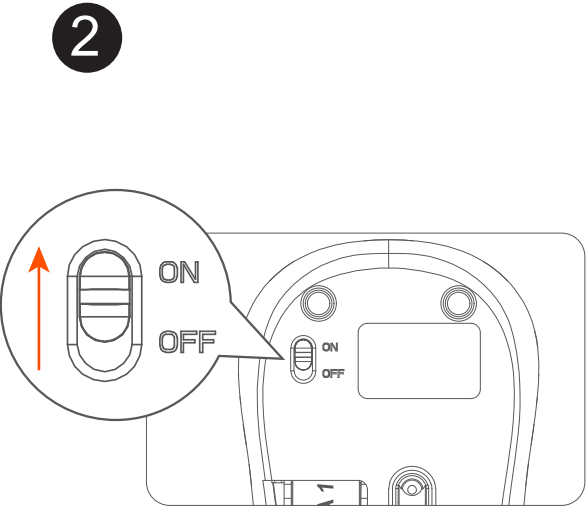
FN+MULTIMEDIA FUNCTION KEYS



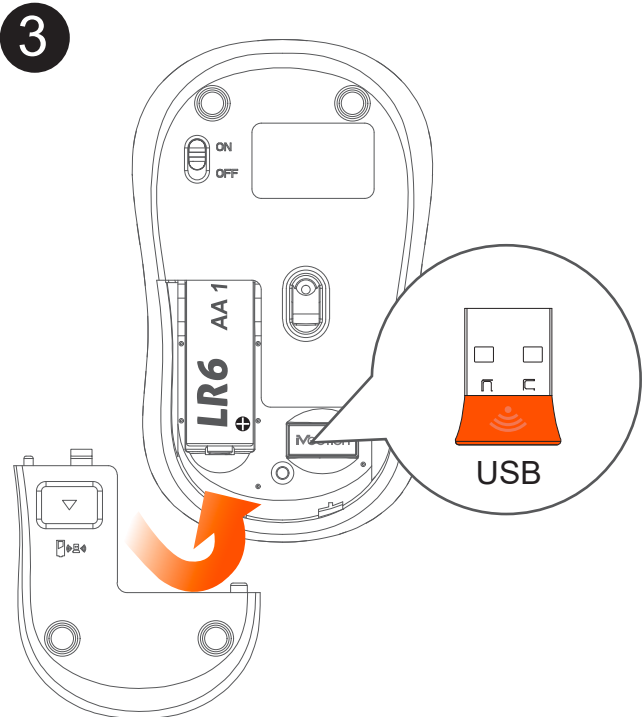
STEPS FOR USAGE



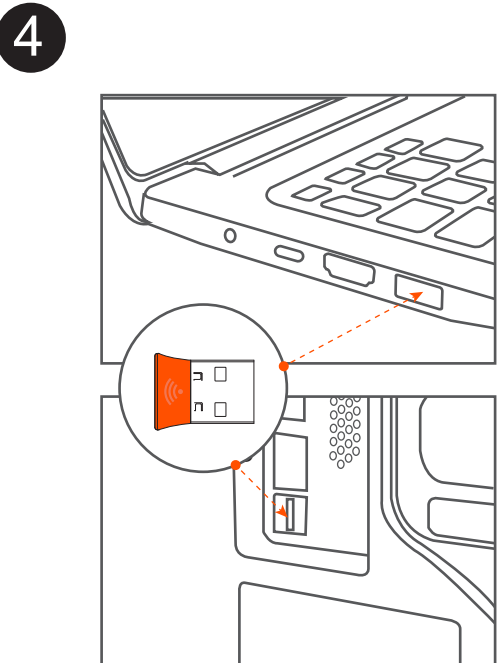
Open the battery compartment covers on the bottom of the keyboard and mouse.
Insert two AAA batteries into the keyboard and one AA battery into the mouse.



Turn on the power switch of the mouse.
The keyboard automatically powers on after inserting the batteries.



Pull out the USB receiver on the bottom of the mouse.
Then close the battery compartments.
Please keep the battery covers in a closed position.



Insert computer USB interface
(When the product is used for the first time, an automatic hardware installation prompt will pop up in the lower right corner of the computer)