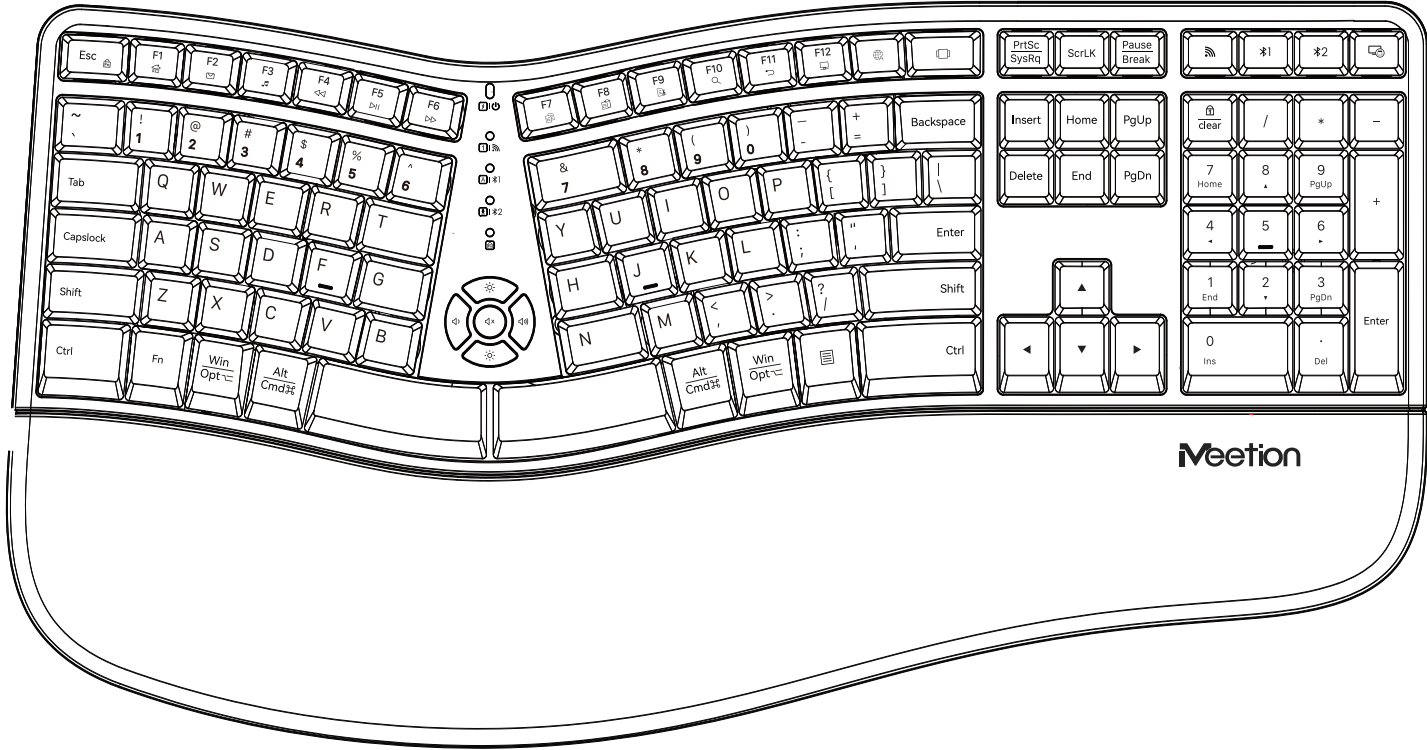




Directorwe2

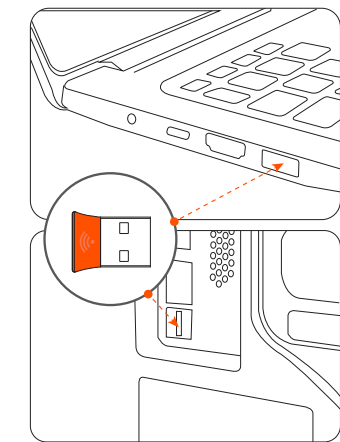
USER'S MANUAL

WIRELESS ERGONOMIC KEYBOARD

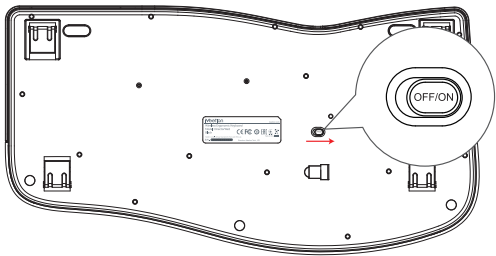


	Red light stays on: Keyboard is charging Green light stays on: Battery is fully charged Red light flashes: Keyboard is low on power		FN Locking		homepage		email		music	<div></div> <div>When connecting the computer, the keyboard will automatically recognize the computer system.If the computer cannot automatically recognize the system, please manually switch the computer system.Fn+m: Switch the keyboard to the Mac OS system.Fn+n: Switch the keyboard to the Windows system.</div>	<div></div> <div>In the Mac system, the default shortcut keys are function keys. In the Windows system, the default shortcut keys are F1-F12. When the Fn lock is turned off, you need to press Fn + the shortcut key to activate the shortcut function. (Press Fn + Esc to turn on/off the Fn lock.)</div>
	Green light stays on: Num Lock is enabled Green light flashes briefly: 2.4G mode has been entered		Previous		Play/Pause		next		copy		
	Green light is constantly on: Caps Lock is enabled Blue light briefly lights up: Bluetooth mode 1 has been entered Blue light flashes: Entering Bluetooth 1 pairing state		paste		cut		search		back		
	Green light is constantly on: Roll lock has been enabled Blue light briefly lights up: Bluetooth 2 mode has been entered Blue light flashes: Entering Bluetooth 2 pairing state		computer		Switch input method		APP switching		Lock screen		
	Green light is always on: FN lock is activated Note: After the FN lock is activated, the functions of keys F1 to F12 will be changed		Click to switch to 2.4G (USB receiver) connection mode			Click to switch to Bluetooth 1/2 mode. Press and hold to start pairing.					

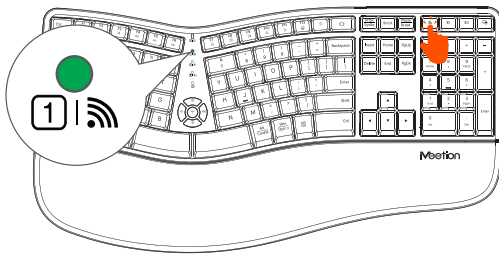
2.4G Mode Usage Instructions (USB Receiver)



1. Insert the USB receiver into the USB port of the computer.

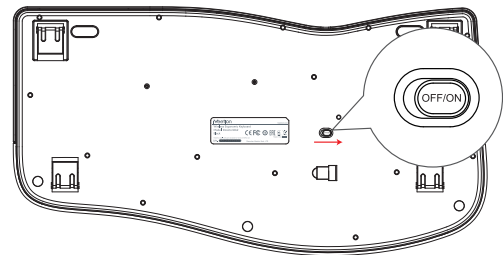


2. Turn the switch to the "ON" position on the right to turn on the equipment.

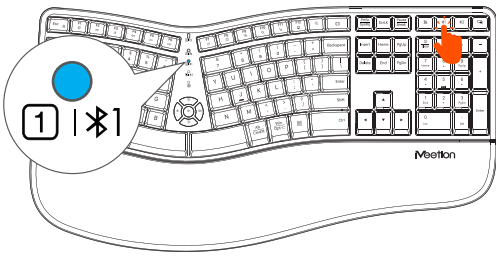


3. Click the button to switch to 2.4G mode, the corresponding 2.4G indicator light is on.

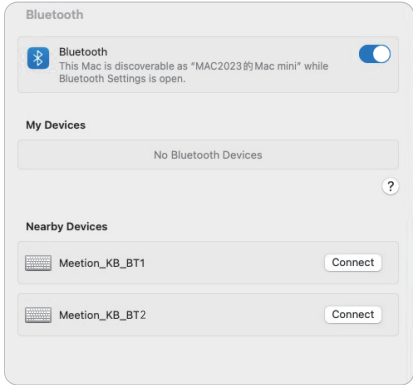
Bluetooth Instructions



1. Turn the switch to the "ON" position on the right.



2. Click the button to switch to Bluetooth 1/Bluetooth 2 mode. The corresponding Bluetooth 1/Bluetooth 2 indicator lights will turn on the blue light and start blinking.



3. Find the name "Bluetooth" in the settings of the computer. "Meetion\_KB\_BT1"/"Meetion\_KB\_BT2" The equipment has been connected and is ready!

Keyboard

How to reconnect Bluetooth?



If you want to reconnect the Bluetooth keyboard, please click the \*1 / \*2 button to switch to "Bluetooth 1"/"Bluetooth 2" mode, then press and hold the \*1 / \*2 button again to make the blue light flash, and then you can connect it in the Bluetooth settings!

⚠ If the keyboard malfunctions, you can press and hold the FN + C keys for 3 seconds to restore the factory settings.

**GENERAL**  
All MEETION brand products comply with US FCC standards (FCC ID: 2A706-MT062726), EU CE standards, CAUK standards, and Bluetooth BQB certification.  
The product is manufactured in accordance with RoHS standards.

**PRECAUTIONS**  
1.Safety precautions for product use:  
(1) Do not dismantle, strike, crush, or expose it to fire.  
(2) Stop using it immediately if severe swelling occurs.  
(3) Do not place it in a high-temperature environment.  
2.Do not use this device near water.  
3.Only use a dry cloth to clean this product.  
4.Please follow the manufacturer's instructions for use.  
5.If the device is damaged,for example,if liquid enters it,if it gets wet in the rain or becomes damp,or if it cannot operate normally,it must be repaired.For repair matters,it should be entrusted to qualified maintenance personnel.

**KIND TIPS**  
If the product is not in use for an extended period, it is recommended to charge it every three months to activate the lithium battery and prevent battery failure due to prolonged non-use.



TECHNICAL SUPPORT

Having technical problems with this product?  
Send an email to [service@meetion.com](mailto:service@meetion.com)  
For more information please visit:  
[www.meetion.com](http://www.meetion.com)