

Low Battery Indicator/Charging Indicator

Low Battery Status: When the device is low on power, the red indicator light in this position will blink on to remind you to charge the device. **Charging Status:** When you are charging the device, the red indicator light in this position will be on continuously, and the red indicator light will be off when the device is fully charged.

2.4G Connection Indicator (USB Receiver)

When entering the 2.4G connection mode, the green indicator at this position will light up, at this time you can plug the USB receiver into the computer for normal use.

Bluetooth 1 Connection Indicator

When entering the Bluetooth 1 connection mode, the blue indicator light will be flashing, at this time you can find the Bluetooth device named "Meetion_MS_BT1" in the Bluetooth setting interface of the computer, and then you can use it normally after connecting.

Bluetooth 2 Connection Indicator

When entering the Bluetooth 2 connection mode, the blue indicator light will be flashing, at this time you can find the Bluetooth device named "Meetion_MS_BT2" in the Bluetooth setting interface of the computer, and then you can use it normally after connecting.

TypeC Charging Port

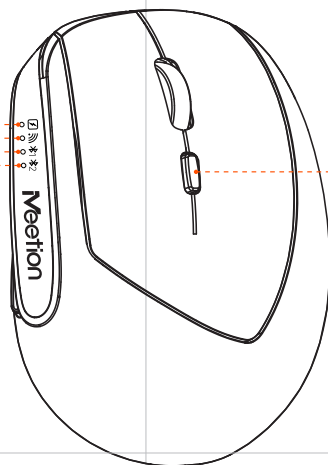
Plug the TypeC type charging cable into the charging port to charge your device. We recommend using our included TypeC charging cable with your computer's USB port or using a safety-certified charger for charging. (Charging this device with a non-compliant charger may cause it to be damaged)

DPI Indicator

White light*1 will light up when the mouse DPI is switched to 800. When mouse DPI is switched to 1200, white light*2 will be on. White light *3 will be on when the mouse DPI is switched to 1600. White light *4 will be on when the mouse DPI is switched to 2400.

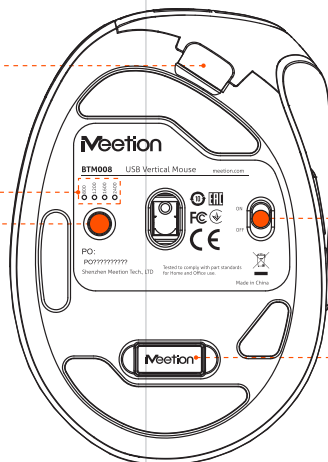
DPI Speed Switch Button

Click this button to adjust the speed of the mouse pointer, with four speed levels (DPI): 800/1200/1600/2400. The default speed level (DPI) is 1600.



Mode switching button

Click: Switch the current connection mode. (switching order: 2.4G->Bluetooth 1->Bluetooth 2)
Long press: when you need to reconnect the Bluetooth device, long press it to enter pairing mode. (2.4G mode can be used by simply plugging the USB receiver into the new device)



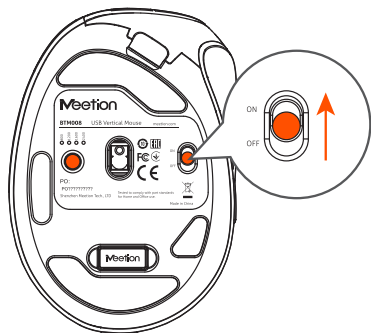
Power switch ON/OFF

Toggle the switch to the ON position to turn the unit on (toggle up).
Switch to the OFF position to turn off the device (downward flick).
(It is recommended to turn off the unit when it is not in use for a long period of time to protect the battery life.)

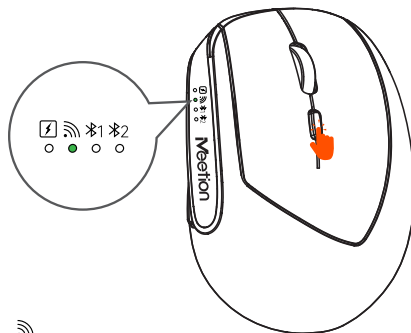
USB receiver

USB receiver for mouse in 2.4G connection mode
(We recommend storing the USB receiver in this location when not in use)

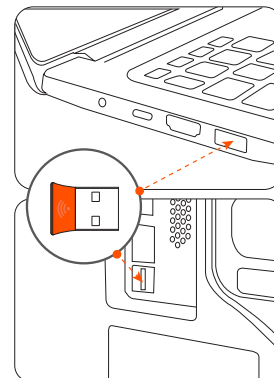
2.4G Mode Instructions (USB Receiver)



1. Toggle the switch upward to the "ON" position to turn the device on.

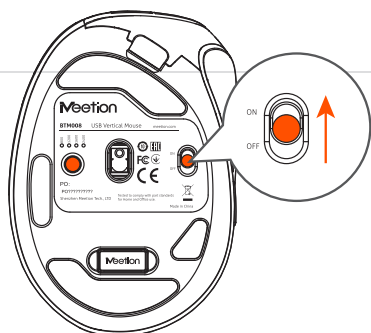


2. Click the "Mode Switching Button" to switch to 2.4G mode, the corresponding 2.4G indicator will light up green.

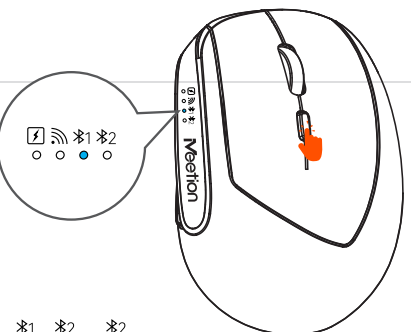


3. Insert the USB receiver into the USB port of your computer, get ready!

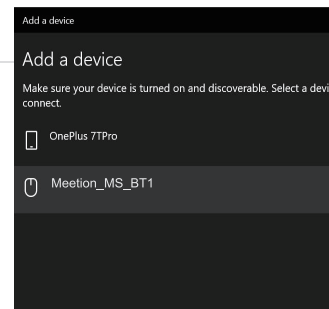
Bluetooth instructions



1. Toggle the switch upward to the "ON" position to turn the device on.



2. Click the "Mode Switching Button" to switch to Bluetooth 1/2 mode, the corresponding Bluetooth 1/2 indicator will light up blue and start blinking.



3. Find the device named "Meetion_MS_BT1" / "Meetion_MS_BT2" in your computer's Bluetooth settings and connect it, get ready!

How to reconnect Bluetooth?



If you want to reconnect your Bluetooth device, please click the "Mode Switching Button" to switch to Bluetooth 1/2 mode, then press and hold the "Mode Switching Button" to make the blue light blinking, and then you can connect it in the Bluetooth settings!

GENERAL

All MEETION brand products comply with US FCC standards (FCC ID: 2A706), EU CE standards/CAUK standards, Bluetooth BQB certification.

The product is made in accordance with RoHS standard.

PRECAUTIONS

1. This product contains a rechargeable lithium battery.
 - (1) Do not dismantle, strike, crush, or put it into a fire.
 - (2) Stop using it immediately if severe swelling occurs.
 - (3) Do not place it in a high-temperature environment.
2. Do not use this device near water.
3. Only use a dry cloth to clean this product.
4. Please follow the manufacturer's instructions for use.
5. If the device is damaged, for example, if liquid enters it, if it gets wet in the rain or becomes damp, or if it cannot operate normally, it must be repaired. For repair matters, it should be entrusted to qualified maintenance personnel.

KIND TIPS

If the product is not in use for a long time, it is recommended to charge it every three months to activate the lithium battery inside the product and prevent battery failure due to long periods of non-use.

Meetion

TECHNICAL SUPPORT

Having technical problems with this product?

Send an email to service@meetion.com

For more information please visit:

www.meetion.com