



TECHNICAL SUPPORT

Having technical problems with this product?

Send an email to
service@meetion.com

For more information please visit:
www.meetion.com

MK008Pro

USER'S MANUAL

Mechanical Keyboard

CONGRATULATIONS ON THE PURCHASE OF MEETION PRODUCTS!

Please read this user's manual before using the unit and retain this user's manual in safe place for future reference.

COPYRIGHT

©2020. MEETION TECH CO., LTD. Version 1.0(V 1.0). This Manual and information contained in it are copyrighted. All rights reserved.

TRADEMARKS

All trademarks are the property of their legal holders

SPECIAL FEATURES

- Wired keyboard, supports key line separation
- RGB color backlight, adjustable brightness
- Hot-swappable mechanical shaft
- OEM height keycaps
- Quick triggering of linear axes
- Fully configured mechanical keyboard
- Adjustable volume knob, supports one-click mute
- Wire length 1.8m

WARRANTY CARD

Model No. 型号		
Date of Sale 购买日期		
Seller 销售商		
Serial Number 序列号		
Address of the Seller 销售商地址		
Phone of the Seller 销售商电话		
Seller Signature & Stamp 销售商签字盖章		Stamp
To be Filled in by Service Center 以下由服务中心填写		
Date of Receipt 收货日期	Date of Receipt 收货日期	Date of Receipt 收货日期
Date of Return 返回日期	Date of Return 返回日期	Date of Return 返回日期
Special Marks 特殊记录	Special Marks 特殊记录	Special Marks 特殊记录

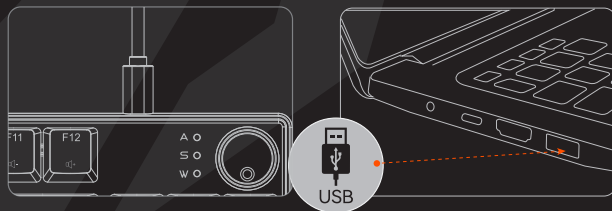
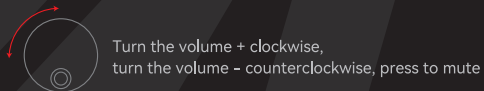
TECHNICAL SPECIFICATIONS

Model	MK008 pro
Colour	Black
Number of keys	87/88+1
Connection method	wired
Compatible systems	Win XP/Vista/7/8/10/11
Size	352*125*40mm
Interface	Type-C
Driver address	www.meetion.com/driver/mk006pro.html

MK008PRO KEYBOARD OVERVIEW

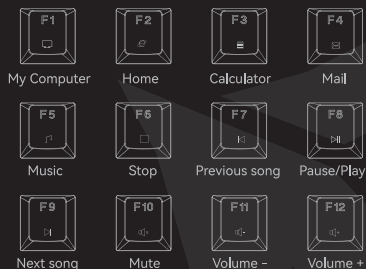


- ❶ Caps Lock indicator light: White light stays on when locked
- ❷ ScrLk Lock indicator light: White light stays on when locked
- ❸ Win lock indicator light: white light stays on when locked



Wired Type-C interface, connect the other end to the PC, and the keyboard will work normally when it lights up

MK008PRO MULTIMEDIA AND KEY COMBINATION FUNCTIONS



TIP: WINDOWS SYSTEM MULTIMEDIA FUNCTIONS REQUIRE FN COMBINATION!



Fn+W press and hold for three seconds, WASD and up, down, left, and right direction keys are interchanged.

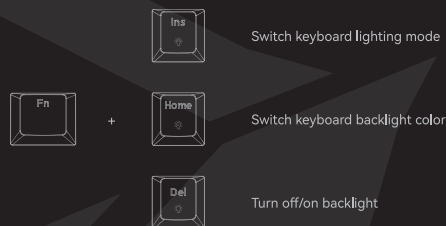


Press and hold Fn+ESC for three seconds to restore factory settings and light effects to default.



Fn+Win Win lock

MK008PRO RGB BACKLIGHT



There are three backlight modes in each lighting mode, which can be switched by pressing continuously, for a total of 18 backlight modes.

