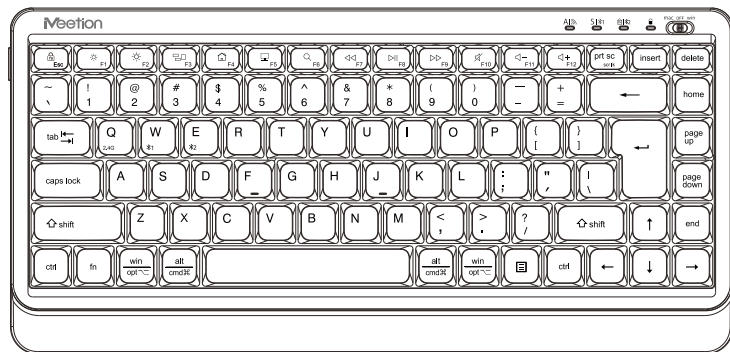


## Mini5000 USER'S MANUAL

WIRELESS COMBO

## MULTIMEDIA FUNCTION KEYS



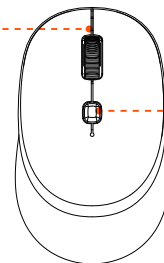
**!** The default multimedia function in all systems.

Short press the "Fn" key followed by the "Esc" key to enable/disable the "Fn Lock" function (for Mac systems).

Alt	The blue light turns on: Switched to 2.4G mode The green light turns on: Caps Lock key.	Decrease brightness	Increase brightness	Multitasking
Scroll Lock	Blue light turns on: Switched to Bluetooth 1 mode Green light turns on: Scroll lock activated.	homepage	Return to the desktop	Sleep
Fn	Blue light turns on: Switched to Bluetooth 2 mode Green light turns on: Fn key is locked.	Previous	Play&Stop	Next
Power	Power on: Red light stays on for 2 seconds Low battery: Red light flashes.	Mute	Volume down	Volume up
mac-off-win	A three-position switch. When you turn it to the left, it switches to the Mac system. In the middle: OFF. When you turn it to the right, it switches to the Windows system.	Esc	Lock screen	

**!** Press Fn + Q/W/E/: Short press / Long press can switch to 2.4G / Bluetooth 1 / Bluetooth 2 / Channel. In the current channel, short press / long press of other channels (Fn + Q/W/E) will switch to other channels.

**Low Battery Indicator/Charging Indicator**  
Low battery status: When the device's battery power is insufficient, the red indicator light in this position will flash to alert you to replace the battery. After replacing the battery: The red light stays on for 2 seconds before going out; DPI switching: The red light will be on once for each switch of the DPI setting.

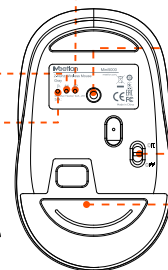


**DPI Speed Switch Button**  
Pressing this button will switch between different mouse pointer movement speeds, ranging from slow to fast: 800/1200/1600/2400/3200 DPI.  
The default DPI speed is set to 1600.

**Bluetooth 2 Connection Indicator**  
When entering the Bluetooth 2 connection mode, the blue indicator light will be flashing, at this time you can find the Bluetooth device name "Meetion\_MS\_BT2" in the Bluetooth setting interface of the computer, and then you can use it normally after connecting.

**Bluetooth 1 Connection Indicator**  
When entering the Bluetooth 1 connection mode, the blue indicator light will be flashing, at this time you can find the Bluetooth device named "Meetion\_MS\_BT1" in the Bluetooth setting interface of the computer, and then you can use it normally after connecting.

**2.4G Connection Indicator (USB Receiver)**  
When in 2.4G connection mode, the green indicator will light up. Then, you can plug the USB receiver into the computer for normal use.



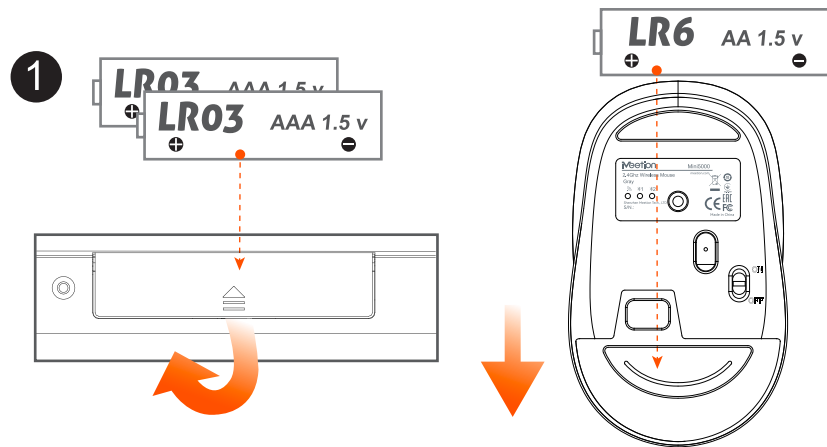
**Mode switching button**  
Click: Switch the current connection mode. (Switch order: 2.4G → Bluetooth)  
Bluetooth mode: long press and hold for 3 seconds to enter pairing mode. (Note: There is no function available under the 2.4G channel.)

**Power switch ON/OFF**  
Up and down toggle switch. This switch turns the unit on or off.

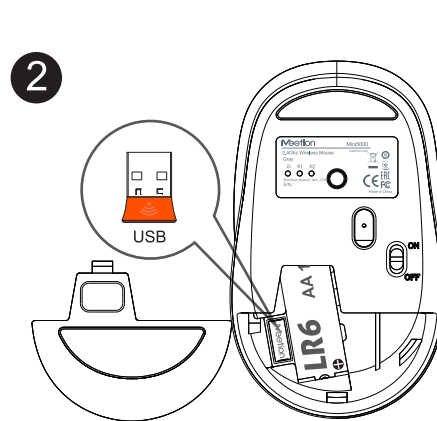
**Battery and receiver compartment**  
It is recommended to store the USB receiver in this location when the mouse is in Bluetooth mode.

## STEPS FOR USAGE

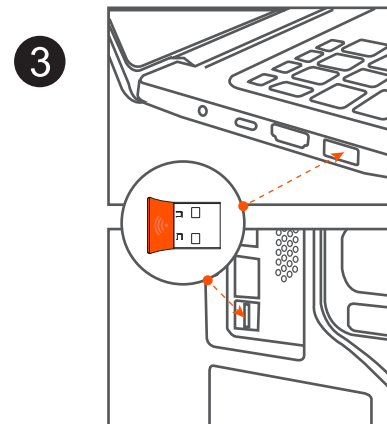
Meetion



Open the battery compartment covers on the bottom of the keyboard and mouse.  
Insert two AAA batteries into the keyboard and one AA battery into the mouse.



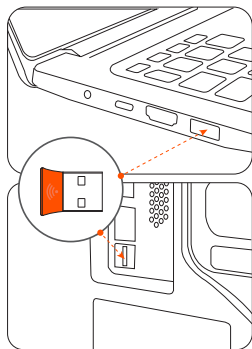
Pull out the USB receiver on the bottom of the mouse.  
Then close the battery compartments.



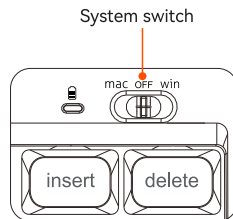
Insert computer USB interface.  
The keyboard and mouse share a common USB receiver.

## 2.4G MODE INSTRUCTIONS

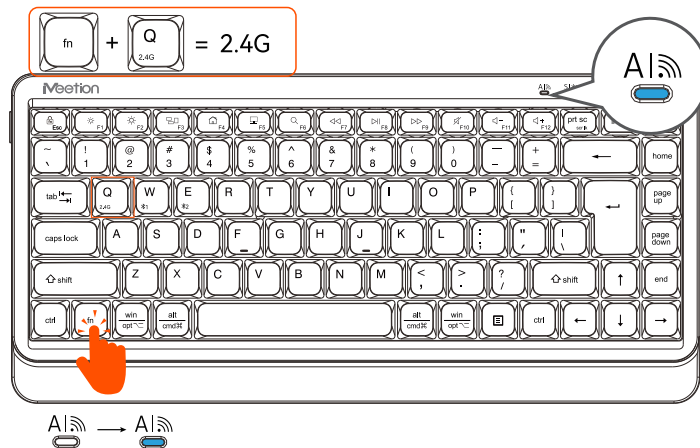
Meeticion



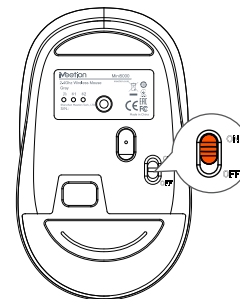
**1.** Plug the USB receiver into a USB port on your computer.



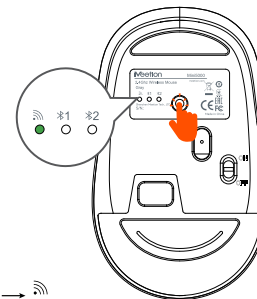
**2.** Switch the keyboard to the Mac/Windows system.



**3.** Press the "FN" key and then the "Q" key to switch to the 2.4G mode. The indicator light will turn on.

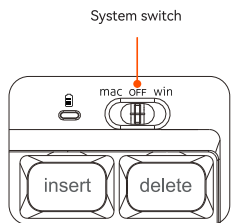


**4.** Toggle the switch upward to the 'ON' position to power on the device.

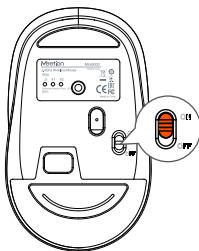


**5.** Click the 'Mode Switching Button' to switch to 2.4G mode. The corresponding 2.4G indicator will light up green. Get ready!

## BLUETOOTH INSTRUCTIONS



1. Switch the keyboard to the Mac/Windows system.



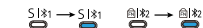
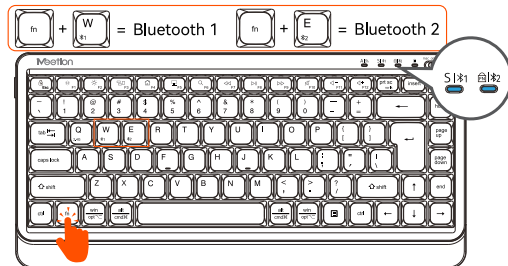
1. Toggle the switch upward to the 'ON' position to power on the device.

### Keyboard

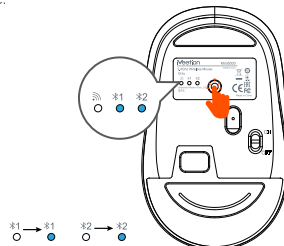
#### How to reconnect Bluetooth?



If you want to reconnect your Bluetooth keyboard, please click  $\ast 1/\ast 2$  button to switch to "Bluetooth" mode, and then long press  $\ast 1/\ast 2$  button again to make the blue light blinking, and then you can connect it in the Bluetooth settings!



2. Press the "FN" key + "W" key to switch to Bluetooth 1 mode, Press the "FN" key + "E" key to switch to Bluetooth 2. At this time, the corresponding indicator lights will illuminate.



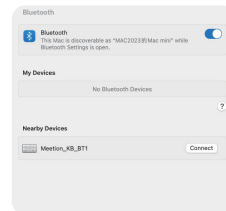
2. Simply click the "Mode Switch Button" to switch to Bluetooth 1/Bluetooth 2 mode. The corresponding indicator light will then turn blue. Are you ready?

### Mouse

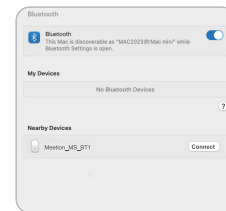
#### How to reconnect Bluetooth?



If you want to reconnect your Bluetooth mouse, please click the 'Mode Switching Button' to switch to 'Bluetooth' mode. Then, long press the 'Mode Switching Button' until the blue light blinks, and connect to it in the Bluetooth settings.



3. Find the device named 'Meetion\_KB\_BT1' in your computer's Bluetooth settings and connect to it. Get ready!



3. Find the device named 'Meetion\_MS\_BT1' in your computer's Bluetooth settings and connect to it. Get ready!

Meetion

**GENERAL**  
All MEETION brand products comply with US FCC standards (FCC ID: 2A706-MT062726), EU CE standards, CAUK standards, and Bluetooth BQB certification.  
The product is manufactured in accordance with RoHS standards.

**PRECAUTIONS**  
(1) Do not dismantle, strike, crush, or expose it to fire.  
(2) Stop using it immediately if severe swelling occurs.  
(3) Do not place it in a high-temperature environment.  
2. Do not use this device near water.  
3. Only use a dry cloth to clean this product.  
4. Please follow the manufacturer's instructions for use.  
5. If the device is damaged, for example, if liquid enters it, if it gets wet in the rain or becomes damp, or if it cannot operate normally, it must be repaired. For repair matters, it should be entrusted to qualified maintenance personnel.

**KIND TIPS**  
If the product is not in use for an extended period, it is recommended to charge it every three months to activate the lithium battery and prevent battery failure due to prolonged non-use.

Meetion

### TECHNICAL SUPPORT

Having technical problems with this product?  
Send an email to [service@meetion.com](mailto:service@meetion.com)  
For more information please visit:  
[www.meetion.com](http://www.meetion.com)



## TECHNICAL SUPPORT

Having technical problems with this product?

Send an email to [service@meetion.com](mailto:service@meetion.com)

For more information please visit:

[www.meetion.com](http://www.meetion.com)