



INSPIRE POTENTIAL IN COMFORT

CW310 WIRELESS COMBO
USER'S MANUAL

Congratulations on the Purchase of MEETION products!

Please read this user's manual before suing the unit and retain this user's manual in safe place for future reference.

COPYRIGHT

©2025. MEETiON TECH CO., LTD. Version 1.0(V 1.0). This Manual and information contained in it are copyrighted. All rights reserved.

TRADEMARKS

All trademarks are the property of their legal holders

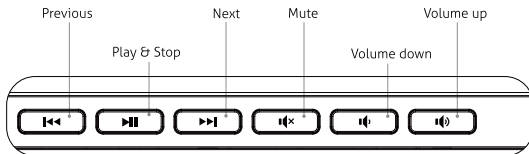
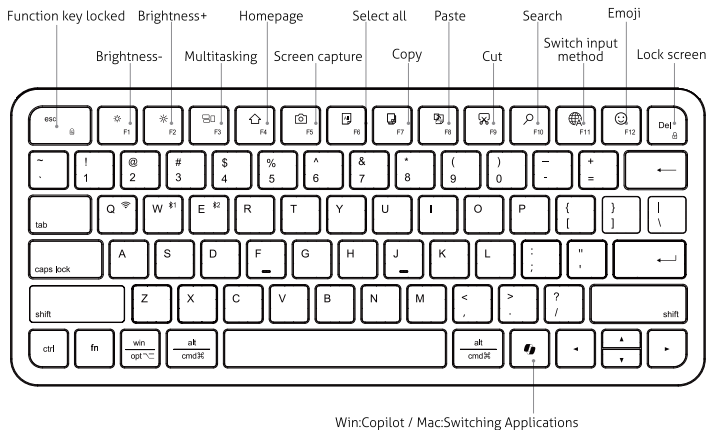
INSTALATION

1. Connect the USB receiver to an available USB port of your PC.
2. The keyboard and mouse share a USB receiver, and once connected to the computer's USB port, the installation will automatically complete.
3. If the not working, please restart power, or disconnect it from your PC and check connect pins for possible damage.

SPECIAL FEATURES

- 2.4G Wireless Transmission Technology.
- 10M wireless receiving distance.
- Mac & Windows Compatible.
- 800/1200/1600/2400 adjustable DPI.

MULTIMEDIA BUTTONS





Blue light always on: Caps lock on.
Blue indicator light is off : Caps lock off.

Green indicator light flashing rapidly: 2.4G entering pairing mode.
Green indicator light flashing slowly: 2.4G entering reconnecting mode.

Blue indicator light flashing rapidly: Bluetooth 1 entering pairing mode.
Blue indicator light flashing slowly: Bluetooth 1 entering reconnecting mode.

Blue indicator light flashing rapidly: Bluetooth 2 entering pairing mode.
Blue indicator light flashing slowly: Bluetooth 2 entering reconnecting mode.

Red light flashing rapidly: The device is low on power.
Red light is always on: The device is currently charging.
Green light is always on: Device fully charged.



In Mac system, the default shortcut keys are function keys. In Windows system, the default shortcut keys are F1-F12.

When Fn lock is closed, you need to press Fn+Shortcut to achieve the shortcut function. (Press Fn+Esc to open/close Fn lock, For Win only)



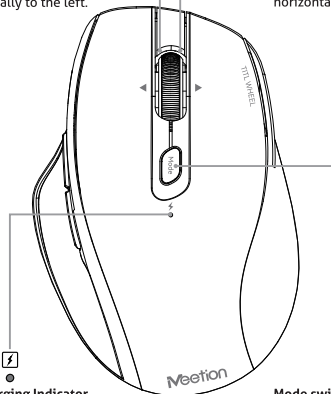
The keyboard will automatically recognize the computer system. When connected to a computer; if the computer can not automatically recognize the system, please manually switch the computer system.



If you experience a keyboard malfunction, you can press and hold the 'FN + Delete' key for 5 seconds to restore the keyboard to its factory settings.

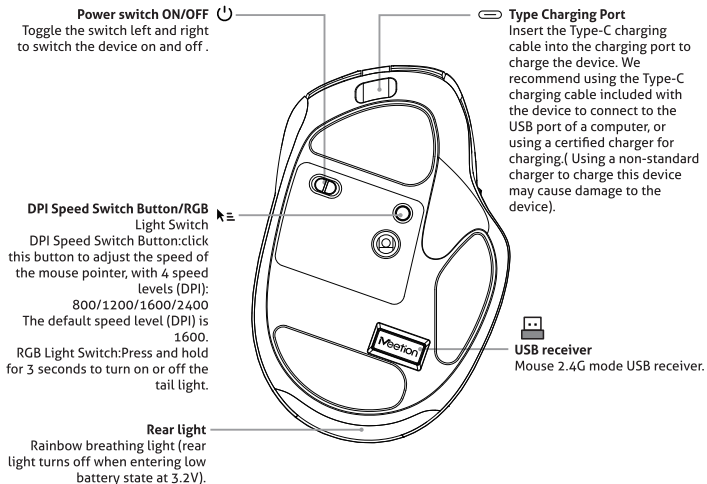
Scroll wheel left button
Scroll wheel left click, page scrolls horizontally to the left.

Scroll wheel right button
Scroll wheel right click, page scrolls horizontally to the right.



Low Battery Indicator/Charging Indicator
Low Battery Status: When the device is low on power, the red indicator light in this position will blink on to remind you to charge the device. Charging Status: When you are charging the device, the red indicator light in this position will be on continuously, and the red indicator light will be off when the device is fully charged.

Mode switching button
Click: Switch the current connection mode.

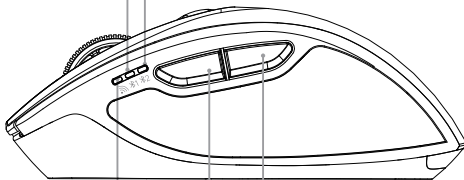


Bluetooth 1 Connection Indicator *1

When entering the Bluetooth 1 connection mode, the blue indicator light will be flashing.

***2 Bluetooth 2 Connection Indicator**

When entering the Bluetooth 2 connection mode, the blue indicator light will be flashing



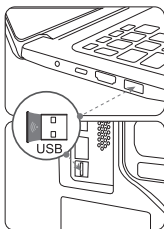
2.4G Connection Indicator(USB Receiver)

When entering the 2.4G connection mode, the green indicator at this position will light up, at this time you can plug the USB receiver into the computer for normal use.

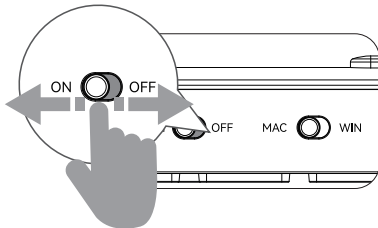
Side button1
Click: forward.

Side button2
Click: back.

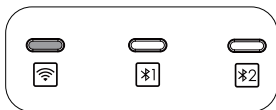
2.4G MODE INSTRUCTIONS




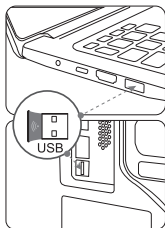
1. Plug the USB receiver into a USB port on your computer(The keyboard and mouse share a USB receiver).



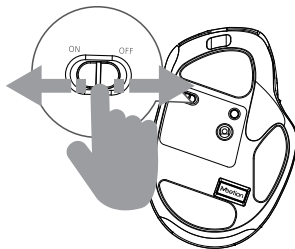
2. Turn the switch to "ON" to turn on the device and switch the keyboard to Mac/Windows



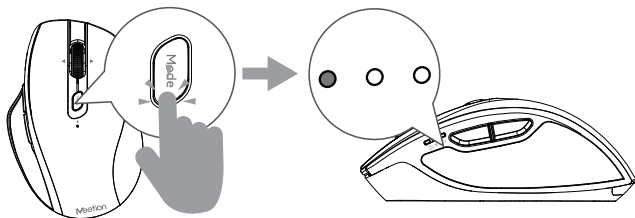
3. Click  button to switch to 2.4G mode, the corresponding 2.4G indicator light is on.



1. Plug the USB receiver into a USB port on your computer.

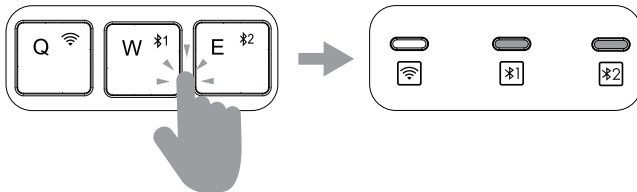


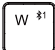

2. Switch to the "ON" position on the left to turn on the device.

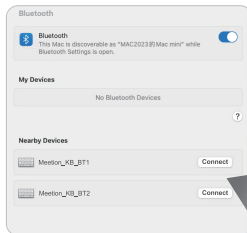


3. Click the "Mode Switching Button" to switch to 2.4G mode, the corresponding 2.4G indicator will light up green, get ready!

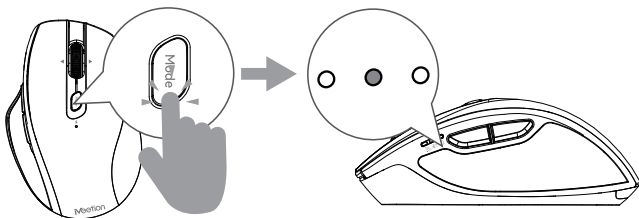
BLUETOOTH INSTRUCTIONS



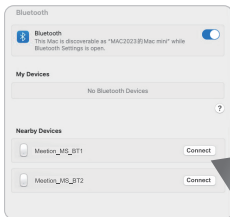
1. Click  /  button to switch to Bluetooth 1 / Bluetooth 2 mode, the corresponding Bluetooth 1 / Bluetooth 2 indicator will light up blue and start blinking.



2. Find the device named "Meetion_KB_BT1" / "Meetion_KB_BT2" in your computer's Bluetooth settings and connect it, get ready!



1. Click the "Mode Switching Button" to switch to Bluetooth 1 / Bluetooth 2 mode, the corresponding Bluetooth 1 / Bluetooth 2 indicator will light up blue and start blinking.



2. Find the device named "Meotion_MS_BT1" / "Meotion_MS_BT2" in your computer's Bluetooth settings and connect it, get ready!

TECHNICAL SPECIFICATION

Model:	CW310
Number of buttons:	84/85
Connection type:	wireless technology
Compatible system:	Win XP/ Vista 7/8/10/MAC OS
Connector:	2.4G&Bluetooth connection
Wireless distance:	10m
Weight:	Keyboard: 544±5g , Mouse: 84±5g
Product Size:	Keyboard: 288*137*22mm, Mouse:111*75*40mm
Resolution:	2400 dpi

COMPATIBILITY

Applicable system:

Windows (windows XP / Vista / 7 / 8 / Server 2003 / 2000 / Win10 ,etc)
MacOS (macOS 10.10 above is recommended)

In 2.4G mode:

suitable for desktop computers, notebook computers.

NOTE

- ◆ Technical specifications given in this table are supplemental information and cannot give occasion to claims.
- ◆ Technical specifications are subject to change without notice due to improvement of MEETiON production.
- ◆ Technical support by Meetion Tech.



GENERAL

- The safe product, conforming to the US and EU requirements.
- The product is made in accordance with RoHS standard.

The product is made in accordance with FCC standard. The standard was issued in order to decrease the amount of the electronic and electrical waste emitted into the atmosphere.
- The WEEE symbol (the crossed-out wheeled bin) using indicates that this product in not home waste. You protect the environment when you recycle hazardous waste appropriately. In order to get detailed information about recycling this product, please contact your retailer or a local authority.

WARRANTY CARD

Model No. 型号	
Date of Sale 购买日期	
Seller 销售商	
Serial Number 序列号	

Address of the Seller _____
销售商地址: _____

Phone of the Seller 销售商电话 _____	QUALIFIED CERTIFICATE 合格证书 MODEL: _____ (型号) CHECKER: _____ (检查员) DATE: _____ (出厂日期)
Seller Signature & Stamp 销售商签字盖章 <div data-bbox="621 565 702 646" style="border: 1px solid black; border-radius: 50%; width: 60px; height: 60px; display: flex; align-items: center; justify-content: center; margin: 10px auto;"> Stamp </div>	

To be Filled in by Service Center 以下由服务中心填写

Date of Receipt 收货日期 _____	Date of Receipt 收货日期 _____	Date of Receipt 收货日期 _____
Date of Return 返回日期 _____	Date of Return 返回日期 _____	Date of Return 返回日期 _____
Special Marks 特殊记录 _____	Special Marks 特殊记录 _____	Special Marks 特殊记录 _____

Dear Customer!

Thank you for purchasing MEETION product. We guarantee high quality and reliable operation of MEETION products, if technical requirements described in User's Manual are observed. Having purchased this product, Customer hereby agrees to warranty terms stated below.

Please read User's Manual carefully, check package contents and correctness of completing warranty card. Please retain warranty card for the whole term of operation life of the product.

With the present warranty card MEETION confirms that its product is free from defects and is obliged to provide free repair or replacement of faulty parts within warranty period which is prolonged for the term of warranty repair. MEETION reserves the right to refuse free-of-charge warranty repair unless warranty terms stated below have been met by a user. All warranty terms are effective within the scope of applicable legislation which assures protection of consumers' rights.

Warranty terms

"Warranty period set by the manufacturer for all kinds of products, is 12 months from the date of purchase.

1. The warranty is valid only at presence of cash or commodity check and if the warranty card has been completed correctly and it contains such details: model name, serial number (if it is foreseen by the producer), date of purchase, signature of the Buyer and stamp of the Seller.
2. Serial number (if it is foreseen by the producer) and model name of the product should correspond to those specified in the warranty card.
3. Warranty repair is carried out within warranty period specified in the warranty card by authorized service centers only (ASC).
4. Warranty for the product expires, if:
 - a) Instructions given in User's Manual are not observed;
 - b) There are signs of outside interference or obvious attempt of product's repair by unauthorized service center;
 - c) There are found unauthorized modifications of construction or electric circuit diagram of the product (Except for cases stipulated in User's Manual);
 - d) Product designed for personal (household) needs has been used for profit extraction, production needs, or other purposes which do not correspond to its intended application.
5. Warranty does not cover the following:
 - a) Mechanical damages or damages due to improper transportation or storage;
 - b) Damages caused by presence of foreign objects, substances, liquids or insects inside the product;
 - c) Damages caused by natural calamities, fire, household factors, accidental external factors;
 - d) damages caused by non-correspondence of parameters of power supply, telecommunications and cabling networks to State standards and other external factors;
 - e) Damages caused by using nonstandard consumables, adapters and spare parts.
6. Warranty does not cover consumables.
7. MEETION does not assume responsibility for possible damages/injuries directly or indirectly sustained by MEETION products to people, domestic animals or property, if such damage/injury has been suffered as a result of noncompliance with rules or conditions of operation of the product or it's in spallation, deli be rate or incautious actions of a user or third persons."

If any problems occur during operation of the product, we strongly recommend addressing service centers authorized by the manufacturer of MEETION products only, addresses and phone numbers of which are found at **WWW.MEETION.COM** and e-mail: **info@meetion.com**.

I hereby accept terms of warranty servicing.

Signature of the Buyer



TECHNICAL SUPPORT

Having technical problems with this product?

Send an email to
service@meetion.com

For more information please visit:
www.meetion.com