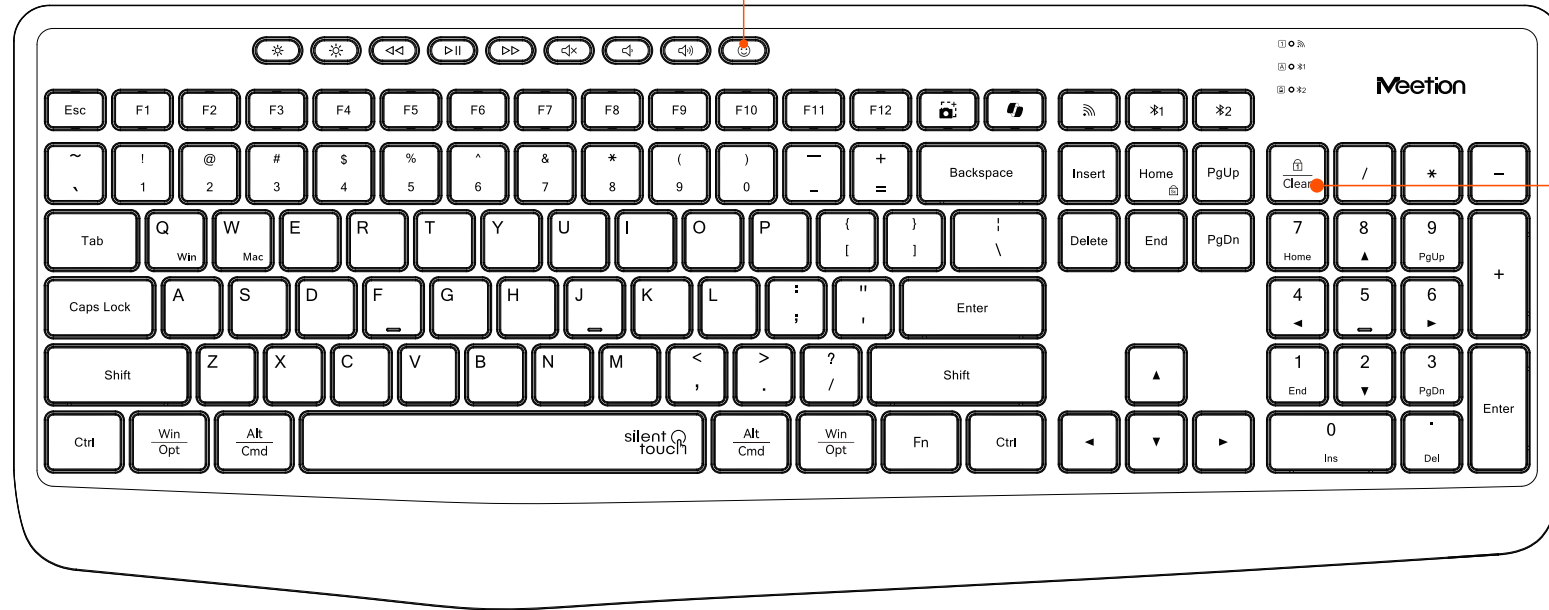
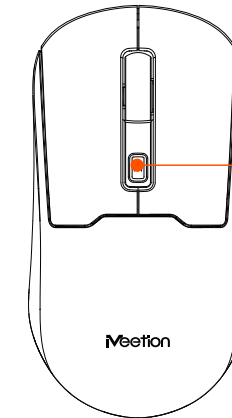




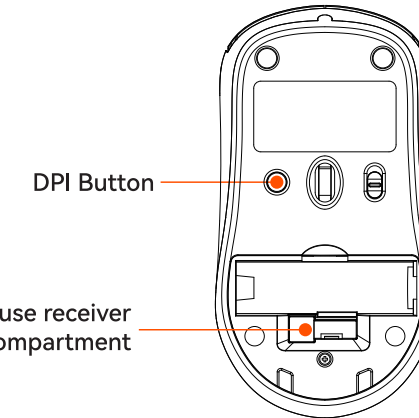
The emoji key function supports Windows, MacBook (macOS), iPad (iPadOS), and Android Samsung devices, but does not support iPhone (iOS).



numeric lock



Mode Button



DPI Button

Mouse receiver storage compartment



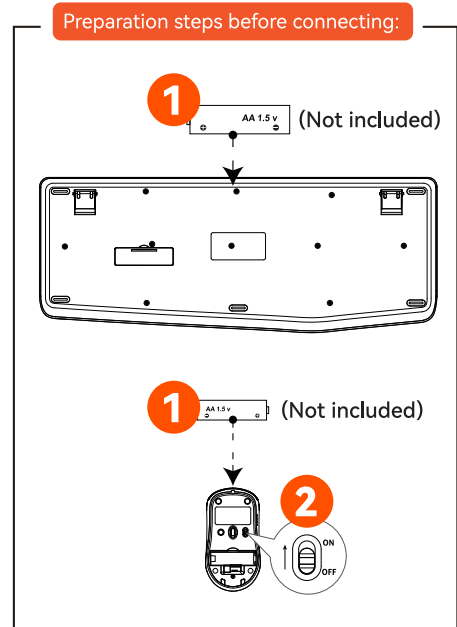
In 2.4G mode, the system requires manual switching.

In Bluetooth mode, Windows/Mac systems automatically recognize the device.

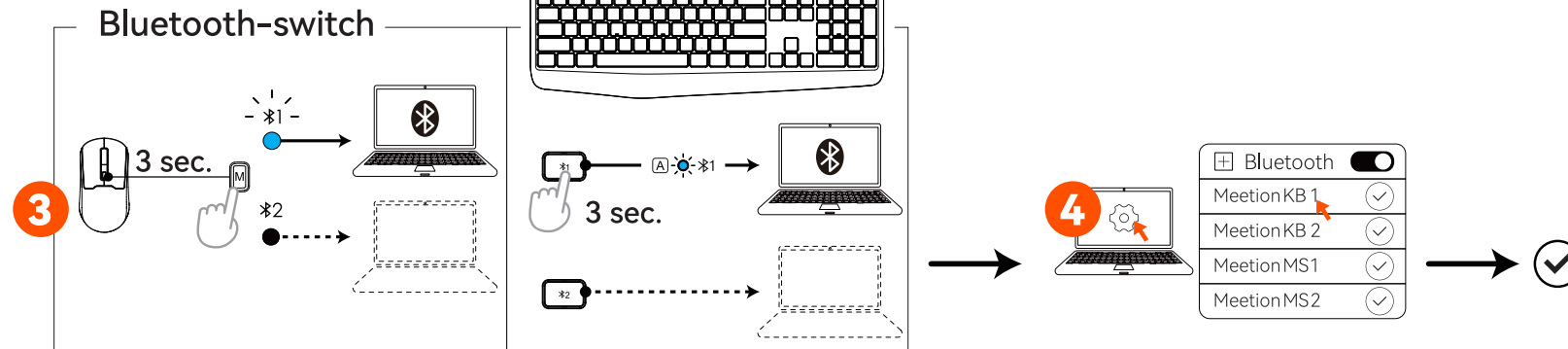
Windows/Mac systems default to function shortcut keys.(Press Fn+Esc to open/close Fn lock).

**USER'S MANUAL**

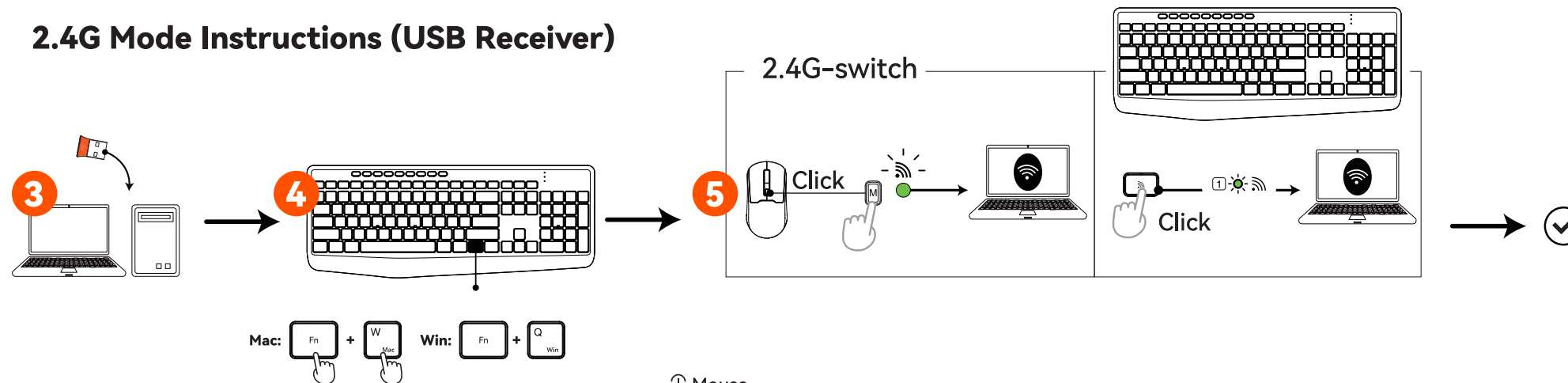
**BTC4133**



## Bluetooth instructions

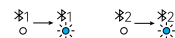


## 2.4G Mode Instructions (USB Receiver)



Keyboard

How to reconnect Bluetooth?



Long press \*1 / \*2 button again to make the blue light blinking, and then you can connect it in the Bluetooth settings!



Mouse

How to reconnect Bluetooth?



Then long press the "Mode Switching Button" so that the blue light blinks, and then connect to it in the Bluetooth settings!

### GENERAL

All MEETION brand products comply with US FCC standards (FCC ID: 2A706), EU CE standards/CAUK standards, Bluetooth BQB certification.  
The product is made in accordance with RoHS standard.

### PRECAUTIONS

- This product contains a rechargeable lithium battery.
  - Do not dismantle, strike, crush, or put it into a fire.
  - Stop using it immediately if severe swelling occurs.
  - Do not place it in a high-temperature environment.
- Do not use this device near water.
- Only use a dry cloth to clean this product.
- Please follow the manufacturer's instructions for use.
- If the device is damaged, for example, if liquid enters it, if it gets wet in the rain or becomes damp, or if it cannot operate normally, it must be repaired. For repair matters, it should be entrusted to qualified maintenance personnel.

### KIND TIPS

If the product is not in use for a long time, it is recommended to charge it every three months to activate the lithium battery inside the product and prevent battery failure due to long periods of non-use.

### Troubleshooting:

#### How to deal with disconnection issues, keys repeating or typing delay?

- Replace batteries promptly.
- Restart device, unplug/reinsert receiver; try different USB-A ports if needed.
- Delete Bluetooth connection, re-pair device.
- If issue persists, test on another device & contact via order for help.

#### How to deal with keyboard/mouse won't turn on or stops working?

- Note the positive/negative poles when installing the batteries.
- Replace with new batteries to check if issue is with batteries or keyboard/mouse.
- If keyboard connection/mouse power indicators don't light up, contact via order for help.

#### Keyboard and mouse operation is slow and lagging?

- Check the battery status, if the power indicator light flashes red, please replace the new battery use;
- Keyboard and mouse with automatic hibernation function: If the device is left unoperated for more than ten minutes, intelligent hibernation will be automatically activated, press any key on the keyboard or mouse to wake up the device.
- Note: keyboard and mouse signal coverage up to 33 feet (about 10 meters).

**Meetion**

TECHNICAL SUPPORT

Having technical problems with this product?  
Send an email to [service@meetion.com](mailto:service@meetion.com)  
For more information please visit:  
[www.meetion.com](http://www.meetion.com)